

**Jean Dakin, Pittenweem**

42 High Street KY10 2PL
 T. 01333 311427
 rdakin@btinternet.com
 Richly coloured paintings, local and foreign scenes.

**David Mackin, Camac Jewellery, Pittenweem**

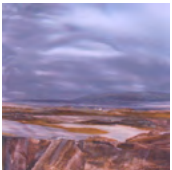
10 East Shore KY10 2LE
 T. 01333 312465
 www.camacjewellery.com
 Handmade jewellery, precious, semi-precious stones
 set in gold and sterling silver.

**Maureen Traquair, Pittenweem**

The Vennel, next to 4 Market Place KY10 2PH
 T. 01333 310809
 www.maureentraquair.com
 Brightly themed figurative paintings, landscapes,
 abstracts, photographs.

**Patricia Tribble, Abercrombie, by St Monans**

(take road opposite veterinary clinic)
 Crombie Cottage KY10 2DE
 T. 01333 730631
 Paintings/drawings. Flowers and other subjects.
 Some ceramics.

**Duncan Macleod, St Monans**

1 The Cribbs KY10 2AD
 T. 07916 311759
 shaunashields@btinternet.com
 Sea and sky entwine – land and seascapes.

**Carol Paterson, St Monans**

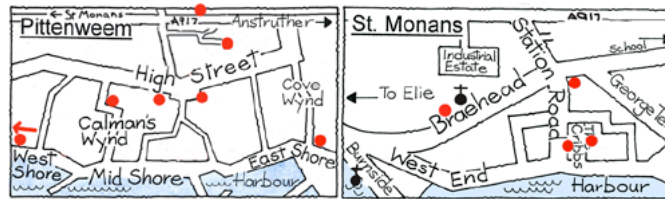
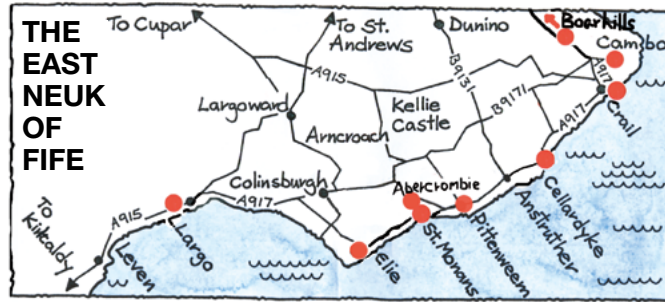
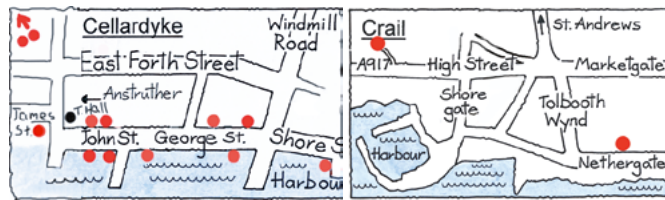
7 Station Road KY10 2BJ
 T. 07977 009759
 www.carol-paterson.co.uk
 Paintings, collage, computer generated prints.

**Martin F Salvage, St Monans**

24 Braehead KY10 2AL
 T. 01333 739131
 vsalvage@lineone.net
 'Sometimes quirky, sometimes serious', in a variety
 of media.

**Jo Whitney, St Monans**

Barronhall, 35 George Terrace KY10 2AY
 T. 01333 730249
 www.jo-whitney.co.uk
 Large colourful oil paintings, marine and figurative.
 Only open first weekend. Closes 4.30pm.



5-6 November 2011
12-13 November 2011

**Artists in the East Neuk of
 Fife invite you to visit them
 in their studios on**

**Saturday and Sunday
 10.30 am – 6.30 pm**

DATES FOR SUMMER 2012
16-17 June and 23-24 June
www.eastneukopenstudios.org

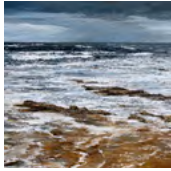
CONTACT:
Tel: 01333 730249
eastneukstudios@yahoo.co.uk

**Paintings, drawings, prints,
 illustrations, ceramics, etchings,
 jewellery, textile art...**

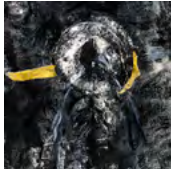
www.eastneukopenstudios.org



Elizabeth Ann Ogilvie, Boarhills
The Old School KY16 8PP
T. 07968 897990
eogilvie@boarhills.fsnet.co.uk
Painting using mixed medium and collage.



Susan Forsyth, Cambo
Stables House, Cambo Estate KY16 8QD
T. 01333 451788
susanforsythart@yahoo.co.uk
facebook.com susan clare forsyth
Landscapes and seascapes in oil.



Judith Heald, Cambo
Stable Studios, Cambo Estate KY16 8QD
T. 01334 880654
Portraits, life drawings, expressionist paintings.



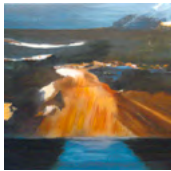
Jake Brown, Cellardyke
4 John Street KY10 3BB
T. 01333 310802
studiohayne@hotmail.com
Paintings, photographs, drawings.



Jill Calder, Cellardyke
10 John Street KY10 3BB
T. 01333 313737 www.jillcalder.com
Pen and ink illustrations. Acrylic paintings of landscape and memories of my travels.
Not open this winter. Open next June.



Robin Forsyth, Cellardyke
28 George Street KY10 3AS
T. 07719 440861
www.paintingsilove.com / artist / robinforsyth
Landscape oil paintings, mostly plein air; impressionism.



Dorothea Gray, Cellardyke
7 George Street KY10 3AS
T. 01333 313288
www.cellardykestudio.co.uk
Paintings.



Kate Hajducka, Cellardyke
61 John Street KY10 3BB
T. 01333 311786
katehajducka@googlemail.com
Encaustic and mixed media paintings and prints.



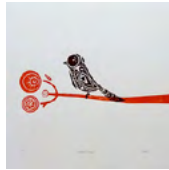
Renate Heath, Cellardyke
4 Harbourhead KY10 3AX
T. 01333 312121
renateheath@aol.com
Pastels, watercolours and prints.



Elinor Kirk, Cellardyke
22 Rodger Street KY10 3HU
(near Barnetts bakery)
T. 01333 311343
http://washhousestudio.blogspot.com
Felted scarves, jewellery and accessories.



Kate Laundon, Cellardyke
35 John Street KY10 3BA
T. 01333 313969
www.katelaundon.blogspot.com
Graphical woodcut prints created using traditional tools and printing methods.



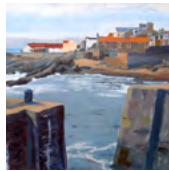
Kirsty Thomas, Cellardyke
St Anns, Fowler Street KY10 3HW
(near Barnetts bakery)
T. 01333 310466 www.lovelypigeon.com
Jewellery, print, illustration and textiles from the Lovely Pigeon studio.



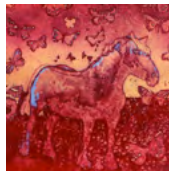
Lisa Rooney, Cellardyke
(Saturdays only)
52 George Street KY10 3AV
T. 01333 313885 www.peskygulls.com
Ceramicist, maker of porcelain dogs, vases and pesky badges. Not open this winter. Open next June.



Ann Smith, Cellardyke
53 James Street KY10 3AZ
T. 01333 310792
annsmith@whsmithnet.co.uk
Drawings and paintings.
Closes 4pm.



Ken Wilkinson, Cellardyke
29 George Street KY10 3AS
T. 01786 822664
kenlaggan@hotmail.com
Land / seascapes, some abstract work in acrylic.



Elizabeth Shepherd, Crail
37 Nethergate KY10 3TU
T. 01333 450887
www.elizabethshepherdetchings.co.uk
Etchings (realistic and colourful), pastels and watercolours of lobster-pots and flowers. Closes 4pm.



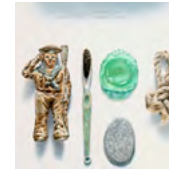
Mary S Webster, Crail
13 Carr Crescent KY10 3XR
(turn into Lamont Terrace)
T. 01333 450300 maryswebster@hotmail.com
Textile artist. Richly coloured abstracts and landscapes. Closes 4.30pm.



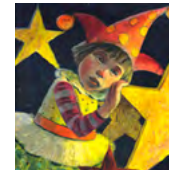
Andrea Ellis, Elie
12 South Street KY9 1DN T. 01333 330488 or 07721 932050 drum2870@googlemail.com
I try to capture the ever changing light, the constantly moving sea and the visual impact of the incredible storms. Oils and acrylics.



John Mitchell, Lower Largo West Gowanbrae, 4 Temple KY8 6JH Park in Temple car park, three minute walk to end of village. Second house on beach side. T. 01333 320400 www.largoart.co.uk
Landscapes, seascapes in oils and watercolours, prints and cards.



Reinhard Behrens and Margaret L. Smyth, Pittenweem
7 Calman's Wynd KY10 2NS
T. 01333 312083
www.naboland.co.uk
Reinhard: highly detailed drawings and paintings about 'naboland'.
Margaret: richly coloured figurative paintings, abstracts, land / seascapes inspired by East Neuk.



Morrison Brown, Pittenweem
Tolpion, Routine Row KY10 2LS
T. 07949 962448
gorskabrown@hotmail.co.uk
Abstracts, land / seascapes inspired by the East Neuk.



Sheila Caldwell, Pittenweem
Abbotsford, 30 James Street KY10 2QN
T. 01333 311468
www.starlightartwork.vpweb.co.uk
Paintings in acrylic, watercolour, pastel and encaustic.



Heather Cunningham, Pittenweem
Seabeach, West Shore (last house on West Shore nearest St Monans) KY10 2NU
T. 01333 311248 hjc.seabeach@virgin.net
Mixed media paintings and cards inspired by East Neuk and beyond.

